

Together with Love, we can Inspire, Discover and Thrive

18th March 2022

MESSAGE FROM MISS KENNEDY

Therapy dog

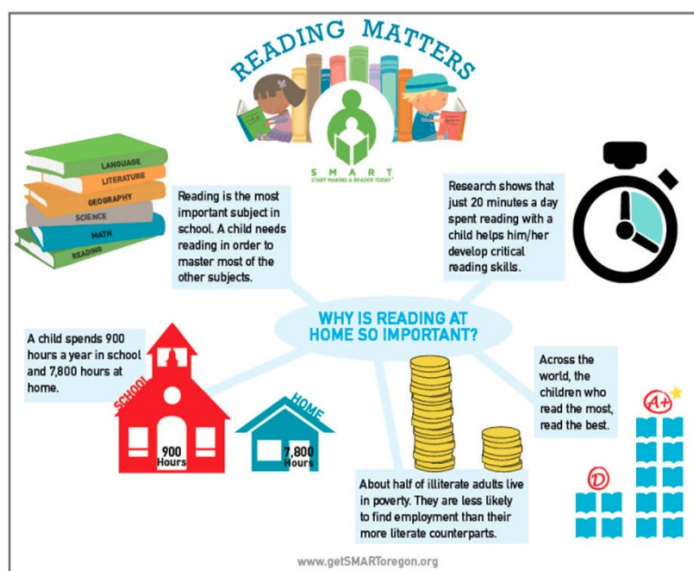
It was lovely to see the therapy dog in school yesterday. Charlie spent the afternoon with the Nurture group, she enjoyed all the attention and some children read stories to her. I think she was pretty tired by the end of the afternoon.



Fundraising-The final amount raised was £282.54 from the cake sale, great effort everyone, well done! Additional funds were raised by Maisie McLaughlin who had a cake sale at her mum's work, thank you Maisie you are a star!

School Improvement-Next week we will have an important visitor in school. Paul Hodson works for the trust; and he supports the schools in school improvement. He visits every school several times per year. He will be in school on Thursday afternoon and his focus will be on SEN provision, Maths and personal development.

Why Reading at Home is Important



Assessments-On the week of the 28th of March the children will have reading and maths assessments in school, these are for all the children from year 1-6. The assessments will help the teachers track progress and this will help the teachers with future planning. The children in the RWI programme will also have some assessments, we track phonic data every half term. The children in year 2 and 6 will complete past SATS papers. The children in years 1,3, and 5 will have NFER assessments which are for the Spring term.

Reading at home- I think this article explains the importance of reading at home very well.

Pendeen

It's been a lovely week in Pendeen class. We have been making the most of the nice weather and getting outside as much as possible. The children have been making their own little books of 'We're Going on a Bear Hunt' in literacy. In maths the children have been looking at the composition of 9 and 10, we enjoyed a whole class game of bingo too. In our PSHE this week the children have been learning about healthy eating and made themselves a small fruit salad each.

Have a lovely weekend Mrs Wilton



Trevose

This week we have been enjoying our learning in topic and science. We have researched who Yuri Gagarin is and why he is a significant individual. We enjoyed recording new facts using pictures to help us remember them. We enjoyed hot seating Baby Bear during Literacy this week, he was a fun character to pretend to be!



We also found something strange on Tuesday in our outdoor area! Something has visited and left us a challenge to find out lots of information about the human body. We enjoyed playing with the slime that they had left behind and then creating mini posters to explain what each part of our bodies does. We have also enjoyed learning our song Your Imagination and were challenged to play the glockenspiel alongside the singers! Well done for a great week, Trevose. Have a lovely weekend!



Both Lucy and Zachary
celebrate their birthdays soon

Tater Du



What a week in Tater Du and the sun has been shining so it's been extra glorious. We have been working hard in our maths the year 3s are working through fractions and the year 4s have begun decimals. Times tables are a big focus to learn, and we have been practising our 9s this week. In literacy we have been learning the story Escape from Pompeii and the children have done some hot seating as if they were the characters Livia and Tranio. In topic this week we have been looking at volcanoes, seeing what interesting facts we can find and where the ring of fire is. This week's fabulous Friday we have done music and began learning the song "Lean on me" by Bill Withers. PSHE, we are looking at our dreams and goals and in PE we started learning about Hockey. We hope you have a great weekend hopefully the sun stays out for us.

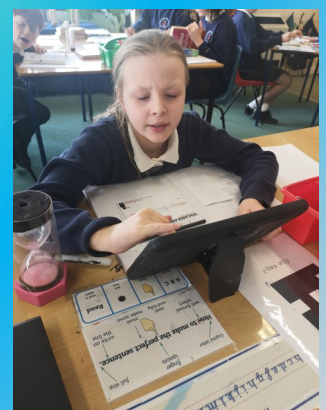
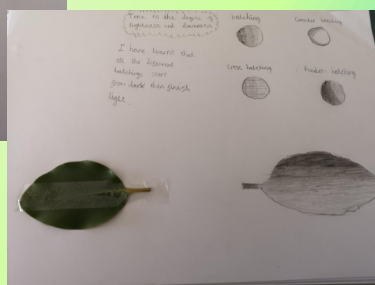
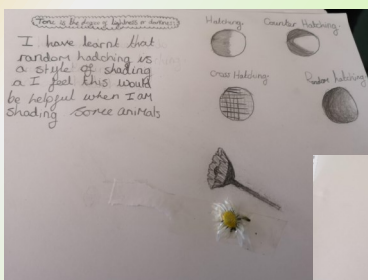


JOKE OF THE WEEK: I met the bloke who invented the crossword today. I cannot remember his name: it begins with a P though. P something, T something R.



Woot Rock

Rockers have been busy this week making inferences in Literacy. We have looked at the book cover of Darwin's Dragons and made educated guesses on what the book might be about. We have also used the text to find evidence on the behaviour and character of Mr Darwin. In Maths, we have continued working on developing our understanding of decimals and, in topic, we have been learning about rainforests and the various layers found within. Thank you to Miss Coon, Mrs Mills and Mrs Scott for all their hard work this week. Have a wonderful weekend.



WILD TRIBE

We have had a wonderful day today, and the sun shone on us!

The children enjoyed toasting marshmallows over an open fire, and then using their senses to hear, see, smell, feel and taste popcorn.

The children also learnt about the Japanese technique of Hapa Zome, or leaf bashing. They identified, and chose flowers, leaves and herbs in order to create patterns on pieces of material. They then used rocks and tools to produce beautifully patterned fabric.

Hope you all have a lovely weekend, and you get to enjoy some more of this glorious weather.

Mrs Mills and Mrs Warne



Charlie the Therapy dog visits School.

Charlie the therapy dog is a Springer Spaniel and she is 9 years old. She visited our school yesterday afternoon. The Bumble Bee group children enjoyed reading her stories and playing games with her. She will be coming into school every two weeks, so expect to see her around school.

(Written by Connor Ryan, Tater-Du)



Thumbs Up!

Dylan

Thumbs up for his maths work. He is really focused and trying hard and this has been coming across in his understanding of fractions!

Very proud of him.

Even been putting his hand up to answer questions.



THUMBS UP



Thumbs Up!

**Noah for great Maths from
Mrs Bulley**

Thumbs Up!

**Well done to Maisie who
raised a further £40 doing a
Cake Sale in Aid of the
Ukraine Refugee Crisis.**

**Well done from all the
staff .**



Thumbs Up!

**Pendeen
Ellie, Grace, Lizzie and Ryley for amazing in
Wild Tribe**

**Martha, Maisie, Lexi, Keida for lovely their
lovely manners, being polite and kind.**

**Wolfrock
for Green group for their amazing Maths
lesson on Thursday**

From Mrs Mills



Thumbs Up!

Adam

**For gorgeous manners
From Mrs Maker**

Head of School Stars of the week





Pupil Star of the week

Maisie for her fundraising efforts.

Staff Star of the week

**Mrs Prins for all the work she is doing to
support the children in Tater Du.**

★ STARS OF THE WEEK ★

Class Name	Star of the week	Values Perseverance	Whole Class
P E N D E E N	Flora because every day you come into school with a smile on your face & try your hardest with all that you do.	Jack for always trying, even when you find it a bit tricky, you never give up! Well done!	To everyone for working so hard in Literacy this week. Great effort! 
T R E V O S E	Phoebe For fantastic effort in Maths and Topic and great homework in PE. Super!	Morgan For always trying his absolute best in everything that he does and persevering when faced with more challenging activities.	To everyone for amazing effort in spellings this week. 
T A T E R D U	Edith for always being friendly, smiley and positive. You are our little Miss Sunshine!	Carter for his perseverance in Maths, you smashed it on Thursday! Well done!	To all of you in Tater Du for great fact finding in Topic! 
W O L F R O C K	Amelia For your hard working, conscientious and diligent approach to learning.	Charlie You are trying really hard in Maths and your perseverance will be rewarded. Well done!	To everyone for making a great start to the Sketching unit in Art today. Great work! 

ATTENDANCE

Expected average attendance for a child is 96.1%. Our attendance figures for last week were as follows:

Pendeen: 91.7 % Trevose: 99% Tater Du: 94.5% Wolfrock: 99.3 %

In accordance with our attendance policy we will be sending some children home with attendance letters during the term to help keep you informed of your child's attendance in line with the new RAG (red, amber, green system). Below are the band widths, as a reminder, if your child falls into one of these coloured bands a letter will be sent home.

GREEN Band 96% to 93% **AMBER** Band 93% to 90% **RED** Band Below 90% (PERSISTENT ABSENTEE) This is a government definition.



How to contact us:



The office is open Monday-Friday 8.30am-3.30pm (lunch time is 12.30—1pm)

Outside these hours, please leave a message on the answer machine or email **grampoundroad.secretary@celticcross.education**. We will endeavour to answer your emails during office hours.

Contact the class teachers through dojo or if you would like to speak to the class teacher or head of school please call to make an appointment. Dismissing pupils at the end of the day is a very busy time, if you would like to discuss something in detail please call the office between the above hours and we will pass the message onto the teacher. We thank you for your patience and understanding.



Supporting young people, and their families, with positive mental health

We recognise that this time of national lockdown may be difficult for children and young people. How a child or young person reacts to being away from school, and their normal routine, may vary according to their age, understanding, their previous experience of lockdown and how they typically cope with stress. Addressing the mental health of your child, and those in your family, can be supported with some of the following resources:

Public Health England have produced the following set of guidance for parents and carers: <https://www.gov.uk/government/publications/covid-19-guidance-on-supporting-children-and-young-peoples-mental-health-and-wellbeing>

Every Mind Matters: A website that explores expert advice and practical tips to help you look after your mental health and wellbeing: <https://www.nhs.uk/oneyou/every-mind-matters/>

May we remind you that, if you have concerns about your child's wellbeing, or the wellbeing or safeguarding of another pupil, please contact the school immediately on: Miss S Kennedy 01726 882646

**We would like to say a BIG
THANK YOU**

**To the Emmanuel Full Gospel
Church who have given each child
a pack to go home with today.**



ASTHMA REGISTER



If your child has asthma please let us know, you will need to fill a form in and return to school along with an in date inhaler IN A CLEAR BAG WHICH IS NAMED.

Drop off and pick up times:

8.45 am—All children dropped to pedestrian gate teachers will line children up and take them to classes.

3.10pm Trevose collected from pedestrian gate.

3.15pm Tater Du and Wolfrock collected from pedestrian gate.

Pendeen will have their own transitional plans next week.

12-12.30 Pendeen & Wolfrock eat in the Hall then go out to play.

12.30-1pm Trevose and Tater Du eat in the hall.

Pin me on the fridge

Term Dates 2022

Spring Term: Tuesday 4th January - Friday 8th April 2022

Bank Holiday: Monday 2nd May 2022

March 2022

Monday 28th March—Parents evening

Tuesday 29th March—Parents evening

April 2022

Thursday 7th April - Magical Picnic Lunch please choose either Vegetarian or meat option via ParentPay

Friday 8th April 2022—last day of Spring Term—Easter Break

Monday 25th April 2022- first day of Summer Term 1

May 2022

9-12th May Year 6 SATS

Tater Du Swimming Mon 16th-Fri 20th May

Wolfrock Swimming Mon 23rd-Fri 27th May

Friday 27th May 2022- Last day of Summer term

Half Term: 30th May - 3rd June 2022

June 2022

Monday 6th June—Extra Platinum Jubilee Inset Day

Tuesday 7th June 2022 First day of Summer term 2

Residential Barton Hall Years 5 & 6 22nd June—24th June 2022

July 2022

Monday 11th & Tuesday 12th July Bikeability Years 5 & 6

Wednesday 13th & Thursday 14th July Global Surfing Year 5 & 6

Friday 22nd July END OF TERM

INSET DAYS:
Monday 25th July 2022

INSET DAYS 2022-2023

5th September, 6th September and 31st October 2022

6th June 2023, 24th July and 25th July 2023



WP **EASTER HOLIDAY CRICKET CAMPS** 

LOCATION - CORNWALL CRICKET CENTRE

SCHEDULE

Apr 12	10-3pm	Y4-Y8 (8-12)	Hardball Camp	£20 Per day
Apr 14	10-3pm	Y1-Y5 (5-10)	Softball Camp (Engagement Into Cricket)	£15 Per day
Apr 19	10-3pm	Y1-Y5 (5-10)	Softball Camp (Engagement Into Cricket)	£15 Per day
Apr 20	10-3pm	Y4-Y8 (8-12)	Hardball Camp	£20 Per day
Apr 22	10-3pm	Y4-Y8 (8-12)	Softball Camp (Engagement Into Cricket)	£15 Per day

BOOK YOUR PLACE
[HTTPS://CORNWALLCRICKET.CO.UK/JUNIOR-CRICKET/HOLIDAY-CAMPS.HTML](https://cornwallcricket.co.uk/junior-cricket/holiday-camps.html)
OR SEARCH
 CORNWALL CRICKET HOLIDAY CAMPS

GRAY-NICOLLS
 ALL PARTICIPANTS TO RECEIVE 20% OFF GRAY-NICOLLS ONLINE SHOP & CORNWALL CRICKET CERTIFICATE

Win one of two Gray-Nicolls bats by simply attending Cornwall Cricket holiday camps between now and summer 2022. You'll be automatically entered for each time you participate. Draw to be made August 2022.

SOFTBALL EQUIPMENT PROVIDED
BOOKING QUERIES CONTACT
admin@cornwallcricket.co.uk

WWW.CORNWALLCRICKET.CO.UK

You're invited



EARLY YEARS PROVIDERS

Please join us for

AFTERNOON TEA AND A CHAT

Discuss your training needs and how REACH Cornwall can assist your organisation over afternoon tea

+ THRIVING TOGETHER

with speakers from the Parent Infant Mental Health Service who support early family relationships for parents, carers, infants and children under five across Cornwall and the Isles of Scilly

Thursday 31 March, 1 - 4pm
Jamaica Inn, Bodmin Moor

Thursday 7 April, 1 - 4pm
Penventon Park Hotel, Redruth

For more info or to book your free place (max. 15 per venue), please contact REACH Cornwall
 t: 01872 305 621 e: healthandcare@truro-penwith.ac.uk

REACH Cornwall (part of ESF Business Clusters) is an employer-led initiative for the social care, healthcare and early years sectors across Cornwall and the Isles of Scilly. Working together to identify training needs and develop innovative, funded workshops, webinars, short courses and longer programmes to address these needs.

   PART FUNDED BY ESF BUSINESS CLUSTERS   European Union Social Fund

FREE EASTER EGG HUNT

FREE CHOCCY • CAKES • REFRESHMENTS

Sat 16th April
10am-12pm

Grampound Road Playing Field

> FIND THE CLUES AND CLAIM AN EGG! <
 > OPEN TO ALL VILLAGE CHILDREN <

Comic Relief / Red nose day

Please make your donation through the following link

donate at <https://app.parentpay.com/ParentPayShop/Foc/Default.aspx?shopid=6734>

